



Test Report

Number : TWNC00138695

Applicant 申請商: Super Sheng Enterprise Co., Ltd. Date : Nov 17, 2009
No.6, Lane 151, Minsheng St.,
Sanhsia Town, Taipei Hsien,
Taiwan

Sample Description 樣品敘述:

One (1) Group Of Submitted Samples Said To Be :
以下測試樣品乃供應商所提供及確認:

Sample Description : Supersen Bracket
樣品名稱
Style / Item No. : BKT-22, BKT-22-A, BKT-22-I, BKT-22-O, BKT-23,
產品型號 BKT-23-A, BKT-23-I, BKT-23-O, BKT-24-I, BKT-24-O,
BKT-25-A, BKT-25-B, BKT-25-C, BKT-25-I, BKT-25-O,
BKT-26-L, BKT-26-LA, BKT-26-R, BKT-26-RA,
BKT-27-L, BKT-27-R, BKT-28-L, BKT-28-R

Country Of Origin : Taiwan

原產地

Supplier's Name : Super Sheng Enterprise Co., Ltd.

供應商名稱

Date Sample Received : Nov 10, 2009

收件日期

Date Test Started : Nov 11, 2009

開始測試日期

Test Conducted 測試執行 :

As Requested By The Applicant, For Details Please Refer To Attached Pages.
依申請商之要求 , 細節請參考附頁 .

Authorized By:
On Behalf Of Intertek Testing Services
Taiwan Limited



K. Y. Liang
Director

This report shall not be reproduced
except in full, without the written
approval of the laboratory.



Number : TWNC00138695

Test Conducted

(I) Test Result Summary 測試結果 :

Testing Item 測試項目	Result 結果 (ppm)
	Black Metal
Heavy Metal / 重金屬	
Cadmium (Cd) content / 鎘含量	ND
Lead (Pb) content / 鉛含量	ND
Mercury (Hg) content / 汞含量	ND
Chromium VI (Cr ⁶⁺) content / 六價鉻含量 (by spot test on metal 金屬材質之點測試)	Negative
Chromium VI (Cr ⁶⁺) content / 六價鉻含量 (by boiling water extraction on metal 金屬材質之沸水法) (mg/kg with 50cm ²)	Negative (< 0.02)

Remarks: ppm = parts per million based on weight of tested sample = mg/kg

備註 = 百萬分之一，依據測試樣品重量計算

ND = Not Detected = 未檢測出

< = Less Than = 小於

mg/kg with 50cm² = milligram per kilogram with 50 square centimeter
= 公斤分之毫克，依據樣品面積的50平方公分計算

Negative = A negative test result indicated positive observation was not found at the time of testing. When the spot test showed a negative result, the boiling water extraction procedure shall be used to verify the result.

此陰性結果顯示樣品在分析過程中無發現任何陽性現象的存在，此外，當點測試的結果為陰性時，樣品應執行沸水萃取的測試程序以確認分析結果。

Responsibility Of Chemist 分析人員 : Irene Chiou / Kevin Liu / Cathy Chen

Date Sample Received 樣品收件日期 : Nov 10, 2009

Testing Period 樣品測試期間 : Nov 11, 2009 To Nov 16, 2009

Test Conducted

(II) RoHS Requirement 限值:

Restricted Substances 限用物質	Limits 限值
Cadmium (Cd) content / 鎘含量	0.01% (100ppm)
Lead (Pb) content / 鉛含量	0.1% (1000ppm)
Mercury (Hg) content / 汞含量	0.1% (1000ppm)
Chromium VI (Cr ⁶⁺) content / 六價鉻含量	0.1% (1000ppm)

The above limits were quoted from 2002/95/EC and amendment 2005/618/EC for homogeneous material.

本限值是依據歐盟指令 2002/95/EC 與其更新指令 2005/618/EC 針對均質材質所訂定。

(III) Test Method 測試方法:

Testing Item 測試項目	Testing Method 測試方法	Reporting Limit 報告極限
Cadmium (Cd) content 鎘含量	With reference to IEC 62321 edition 1.0:2008 in clause 8/9/10, by microwave digestion until the tested samples are totally dissolved and determined by ICP-OES. 參考IEC 62321, 2008年第一版第8/9/10章, 以微波消化法測試樣品直到樣品完全溶解並用感應耦合電漿原子放射光譜儀分析。	2 ppm
Lead (Pb) content 鉛含量	With reference to IEC 62321 edition 1.0:2008 in clause 8/9/10, by microwave digestion until the tested samples are totally dissolved and determined by ICP-OES. 參考IEC 62321, 2008年第一版第8/9/10章, 以微波消化法測試樣品直到樣品完全溶解並用感應耦合電漿原子放射光譜儀分析。	2 ppm
Mercury (Hg) content 汞含量	With reference to IEC 62321 edition 1.0:2008 in clause 7, by microwave digestion until the tested samples are totally dissolved and determined by ICP-OES. 參考IEC 62321, 2008年第一版第7章, 以微波消化法測試樣品直到樣品完全溶解並用感應耦合電漿原子放射光譜儀分析。	2 ppm

Test Conducted

(III) Test Method 測試方法:

Testing Item 測試項目	Testing Method 測試方法	Reporting Limit 報告極限
Chromium VI (Cr ⁶⁺) content (by spot test on metal) 六價鉻含量 (金屬材質之點測試)	With reference to IEC 62321 edition 1.0:2008 in annex B, by spot test. 參考 IEC 62321, 2008 年第一版附錄 B, 以點測試法分析。	Negative (< 1 mg/kg)
Chromium VI (Cr ⁶⁺) content (by boiling water extraction on metal) 六價鉻含量 (金屬材質之沸水法) (mg/kg with 50cm ²)	With reference to IEC 62321 edition 1.0:2008 in annex B, by boiling water extraction and determined by UV-Vis spectrophotometer. 參考 IEC 62321, 2008 年第一版附錄 B, 以沸水萃取並用紫外光-可見光分光光度計分析。	0.02 mg/kg with 50cm ²

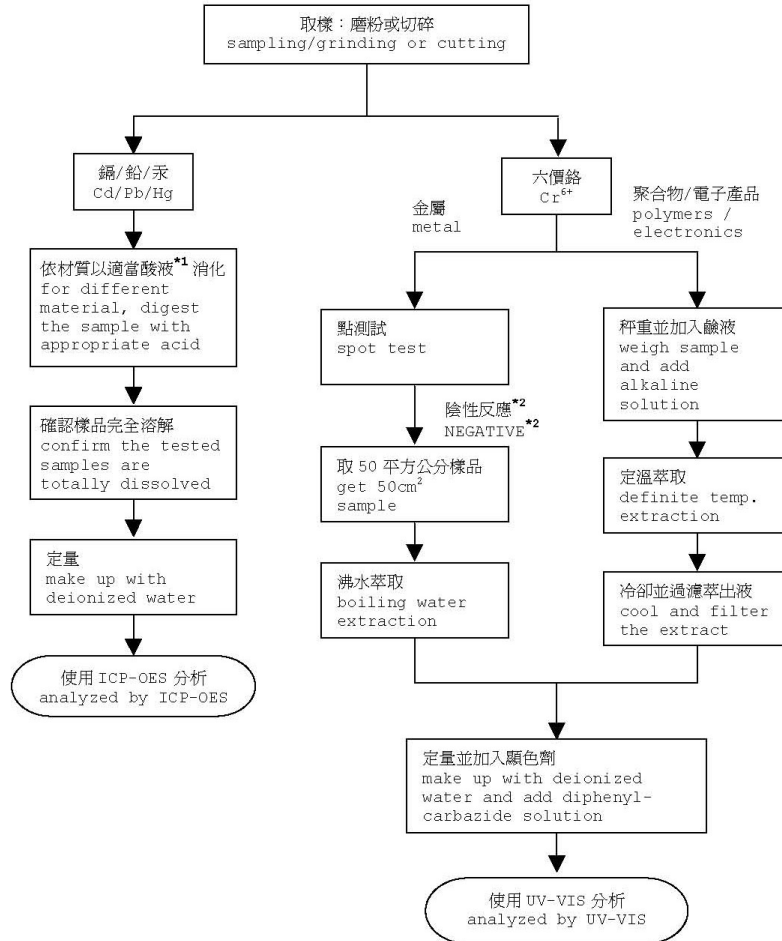
Remark: Reporting Limit = Quantitation limit of analyte in sample
備註 報告極限 = 測試樣品之定量偵測極限

Test Conducted

(IV) Measurement Flowchart 測試流程圖:

Test For Cd/Pb/Hg/Chromium (VI) RoHS四項測試流程圖

Reference Standard 參考方法: IEC 62321 edition 1.0:2008



Remarks 備註:

*1: List Of Appropriate Acid 各材質添加酸液如下表:

Material 樣品材質	Acid Added For Digestion 添加酸液種類
Polymers / 聚合物	HNO ₃ , HCl, HF, H ₂ O ₂ , H ₃ BO ₃ 硝酸、鹽酸、氫氟酸、雙氧水、硼酸
Metals / 金屬	HNO ₃ , HCl, HF 硝酸、鹽酸、氫氟酸
Electronics / 電子產品	HNO ₃ , HCl, H ₂ O ₂ , HBF ₄ 硝酸、鹽酸、雙氧水、氟硼酸

*2: If the result of spot test is positive, Chromium VI would be determined as detected.

若點測試的結果為陽性反應，則直接判定為含有六價鉻。

End Of Report

Test Conducted

Photo

